

Electronic Accessibility

Word (.doc) files are the benchmark of accessibility.

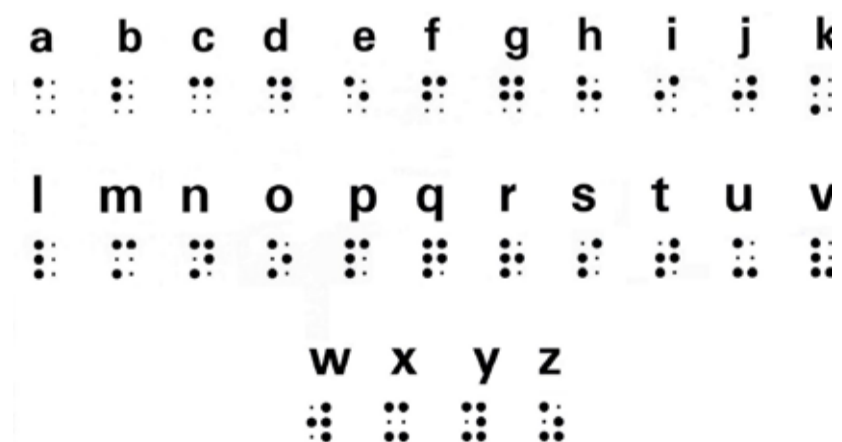
- Upload presentations etc. to Moodle in advance of lectures - this allows students to print the slides, view them personally, or create note structures to follow your lecture.
- Can't provide documents in Word format - need to use PDF? PDFs vary hugely in accessibility—from usable to abominable. Provide PDF files to students in advance so accessibility can be assured or the files be converted to accessible formats using Read & Write 9 (software on all Library computers).

Braille & Large Print

For many visually impaired and blind students, enlarging text or using Braille is the only way to access real, hard copy writing.

How can you enable this?

- Provide accessible electronic documents (Word/.doc files) - where text can be enlarged, coloured or translated to Braille.
- Provide materials in advance - presentations, reading lists, etc.
- The University possesses a Braille embosser and the expertise to produce Braille & external contacts for securely embossing exam papers.



Colour Matters

- Colours and contrast don't just effect the aesthetic of teaching materials - they effect how practical, easy-to-use and thus effective they are too!
- 1 in 10 people are colour blind and some forms of dyslexia effect the readability of colours.
- Short sightedness can be aided with better colour/contrast choices.



Loud & Clear

Please support the SRC's campaign for recording lectures. Why is recording better?

- Helps with recap and revision.
- Did I miss something? - hearing impaired and international students will especially benefit.
- A relaxing way to enjoy learning - especially for those with some forms of dyslexia or visual impairment.

Reading Lists

- Produce and provide reading lists in good advance of teaching.
- Especially important for core reading.
- Obtaining or producing books in an accessible format is tricky and time-consuming business - giving disabled students advanced time ensures they don't fall behind classmates.

Contributors:

Matthew Clark
1107185C@student.gla.ac.uk

Amy Johnson
vp-support@src.gla.ac.uk

